

FALL 2018

Whitemarsh
1704
PENNSYLVANIA

THE NEWSLETTER OF
WHITEMARSH TOWNSHIP

Living

IN THIS ISSUE:

- **Fall Special Events**
- **Comprehensive Plan Update**
- **Township Project Updates**
- **Leaf Collection Information**

1704



whitemarshwp.org

Next Electronic Collection is Wednesday, October 17th, 2018

Leave electronics out on the front curb next to the yard waste for the Township PW crew to pick up. Do not leave out earlier than Tuesday evening. All electronics for collection must be out by 6:00am Wednesday, October 17th.

ELECTRONIC WASTE



A Guide to Recycling Your Electronics



Electronics We Can Accept

- AC Adapters
- Desktop & Laptop Computers
- AV Equipment
- Car Batteries
- Calculators
- Cell & Telephones
- Computer Parts
- Electric Fans, Razors
- Can Openers, etc.
- E-Readers & Tablets
- Game Consoles
- Hair Dryers
- Hard Drives
- Entertainment Systems
- Keyboards, Mice, etc.
- Lamps
- Microwave Ovens
- Monitors &(CRT/LCD)
- MP3 Players
- Printers, Copiers, Scanners, Fax Machines
- Radios
- Rechargeable Batteries
- Space Heaters
- Speakers
- Televisions (intact)
- Toaster Ovens
- Toner Cartridges
- Vacuum Cleaners
- Wires, Cables, Cords, Chargers, Etc.

Electronics We Cannot Accept

- Alkaline Batteries
- Hazardous Waste
- Light Bulbs (any)
- Thermostats (w/ mercury)
- Smoke & Carbon Monoxide Detectors
- Smashed TVs/Monitors
- Pressurized Containers

“ALLE-WASTE ARE **NOT** MADE EQUAL”

Electronics Recyclers are capable of recycling almost anything with an electrical cord or that operates on battery. However, some products are costlier than others to recycle. Cost-effective products help offset the high cost of recycling cost-prohibitive products such as cathode ray tubes (CRT) found in old TVs and monitors, which contain harmful toxic wastes like lead and mercury.

Pennsylvania's COVERED DEVICE RECYCLING ACT, which took effect in 2013, outlawed the dumping of electronic waste in landfills. With reduced options for recycling, there is now a high demand for electronic recycling programs.

By recycling your electronics -- especially those cost-effective products such as computers, cell phones, game consoles, etc. that help offset the increasing costs of recycling products like TVs and monitors -- you are helping create a sustainable future for Whitemarsh Township.





TOWNSHIP CONTACT INFORMATION

Administration Building

616 Germantown Pike
Lafayette Hill, PA 19444
610-825-3535 (TEL)
610-825-9416 (FAX)

Police Department

616 Germantown Pike
Lafayette Hill, PA 19444
610-825-6530 (Non-Emergency)
610-825-5078 (FAX)
911 (EMERGENCY)

Public Works Department

2015 Joshua Road
Lafayette Hill, PA 19444
610-825-3424 (TEL)
610-825-3144 (FAX)

Parks & Recreation Department

(Koontz Park)
2391 Harts Lane
Lafayette Hill, PA 19444
610-828-7276 (TEL)
610-828-7391 (FAX)

Living INSIDE THIS ISSUE

LETTER FROM THE CHAIR	4
POLLING LOCATIONS INFORMATION	6
COMPREHENSIVE PLAN UPDATE	7
TOWNSHIP PROJECT UPDATES	8-9
TOWNSHIP CREDIT RATING ANNOUNCEMENT	11
COUNTY RECYCLING EVENT INFORMATION	11
LEAF COLLECTION INFORMATION	14
BUILDING & CODES UPDATES	15
TOWNSHIP POLICE DEPARTMENT UPDATES	16
BARREN HILL FIRE COMPANY INFO	18
SPRING MILL FIRE COMPANY INFO	19
PARKS & RECREATION PROGRAMS	20-23
SPOTTED LANTERNFLY PEST ALERT	24
WHITEMARSH ART CENTER PROGRAMS	26-27
WILLIAM JEANES LIBRARY PROGRAMS	28-29
TOWNSHIP BOARDS & COMMITTEES	30-31

FROM THE CHAIR



Dear Whitemarsh Residents,

As the seasons transition, we are delighted to share with you the Fall 2018 Whitemarsh Living Magazine. This publication provides information on some outstanding programs and special events scheduled for the residents of Whitemarsh Township, along with some exciting news and updates from across the Township. Some of the items that we are exceptionally pleased to share with you are:

- On Thursday, September 13th, Whitemarsh Township dedicated a new gateway pocket park on the corner of Flourtown Road & Butler Pike. The parcel, originally purchased in 2012 with the Township Open Space EIT fund, was developed into a scenic passive park that includes an accessible walkway and lovely seating areas. More information about this park project can be found on **page 8**.
- The township was awarded a \$250,000 grant from the Commonwealth Financing Authority that will help fund the "P.W. High School Safe Routes to Schools" project. This important safety project will see the installation of push-button-activated flashing pedestrian signals, along with other improvements, to the Germantown Pike crosswalk at Mayflower Rd. The project will also include the installation of a new traffic signal at the intersection of Flourtown Rd. and Colonial Dr. To learn more about this project, see **page 8**.

- In August, Whitemarsh Township was assigned a credit rating of "Aaa" with a Stable Outlook by Moody's Investor Service, the highest possible rating. This rating reflects the township's strong financial profile and overall stability. For more information about this remarkable accomplishment, check out **page 11**.

As you can see, this is an exciting time to be a Whitemarsh Township Resident. We are extremely appreciative of the time and efforts put forth by all of the Township staff members. Without their hard work and dedication to the community, many of the Township's accomplishments would not be possible.

We look forward to another season filled with programs, special events, and other tremendous opportunities for all Whitemarsh Township residents.

To ensure you receive all of the latest news and updates from Whitemarsh Township, be sure to sign up on the Township website and follow Whitemarsh Township on Facebook & Twitter!

Sincerely,

Amy P. Grossman

Amy P. Grossman
Chair



YOUR WHITEMARSH TOWNSHIP BOARD OF SUPERVISORS



Amy P. Grossman
Chair



Melissa Sterling
Vice-Chair



Laura Boyle Nester



Michael Drossner



Fran McCusker

WELLS STREET



OPEN SPACE CLEANUP

Saturday
October 20th

8AM - 11AM

Located On Wells St,
Across From
Cedar Grove Park

Volunteers Needed!

Come and join our team of "Enviroteers" and help us restore this area to a naturally beautiful space for everyone in Whitemarsh Township to enjoy!

Sponsored By



All "Enviroteers" will be provided with an "Enviroteer" shirt, tools, clean-up bags, and gloves. Please wear long pants and long sleeves.

For More Information: www.whitemarshparks.org - (610) 828-7276



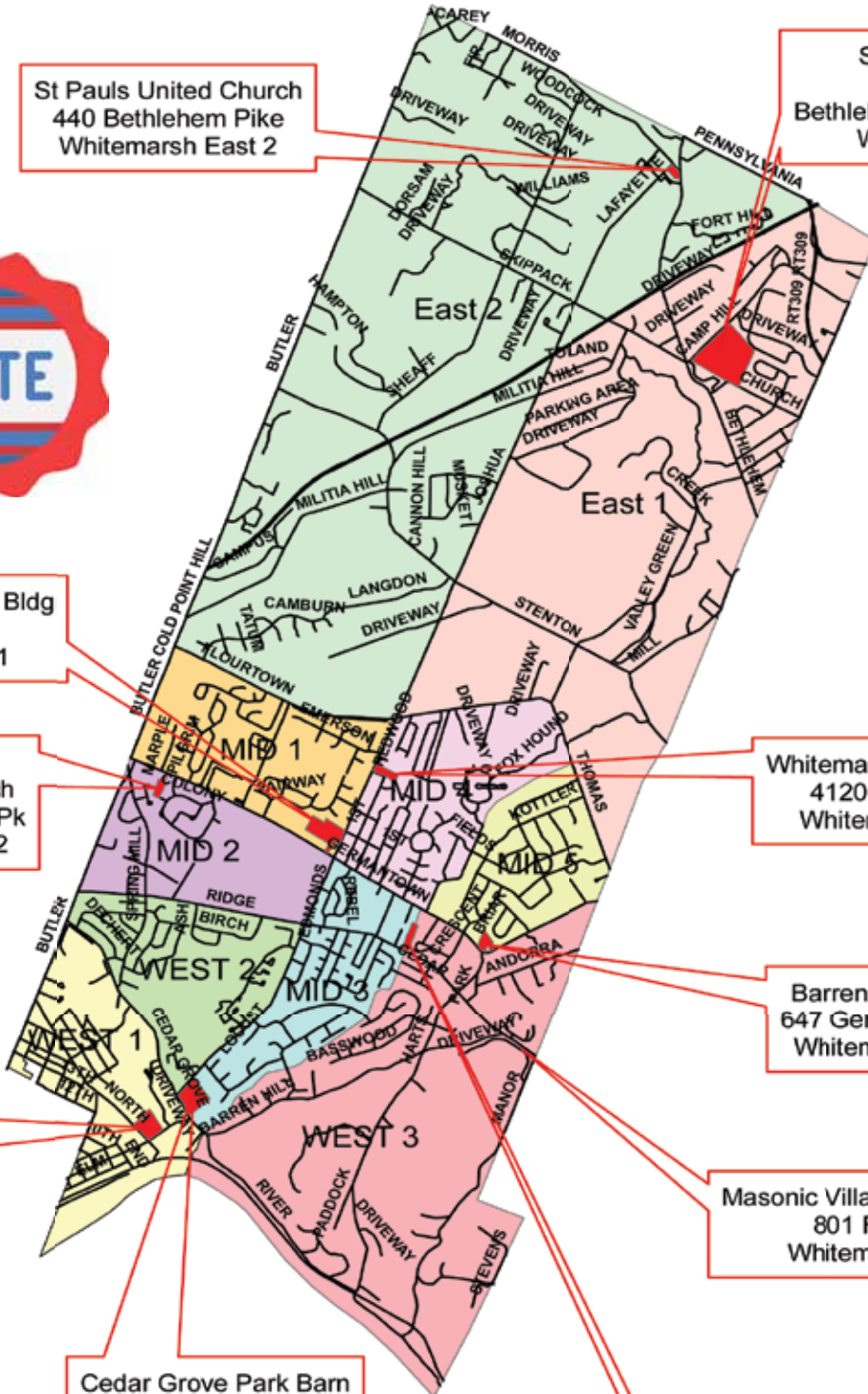
WHITEMARSH TOWNSHIP POLLING LOCATIONS

**2018 Election Day Is
Tuesday, November 6th**



St Pauls United Church
440 Bethlehem Pike
Whitemarsh East 2

St Thomas Church
{Parish House}
Bethlehem Pk & Camp Hill Rd
Whitemarsh East 1



Old Whitemarsh Twp Bldg
4021 Joshua Rd
Whitemarsh Mid-1

Plymouth Mtg
Evangelical Church
42 E Germantown Pk
Whitemarsh Mid-2

Whitemarsh Elementary
4120 Joshua Rd
Whitemarsh Mid-4

Barren Hill Fire Co
647 Germantown Pk
Whitemarsh Mid-5

Spring Mill Fire Co
1210 E Hector St
Whitemarsh West-1

Masonic Village At Whitemarsh
801 Ridge Pike
Whitemarsh West-3

Cedar Grove Park Barn
Cedar Grove Rd
Whitemarsh West-2

Messiah United Methodist
527 Ridge Pike
Whitemarsh Mid-3

**More information available on Country Voter Services website:
<https://www.montcopa.org/753/Voter-Services>**

PLAN FRAMEWORK



Work has been proceeding in earnest on the Township’s update of the Land Use and Housing Elements of the 2003 Comprehensive Plan. Since the end of last year, Bergmann Associates, the consultant for the project, has been working with the appointed Steering Committee to bring the project to final draft status.

In addition to working with the Steering Committee, Bergmann has led two Public Workshops. One in April (held at the Spring Mill Firehouse) was focused on a draft the proposed Land Use Plan. That Plan shows how land throughout the Township should be used over the next decade or so. It accounts for current uses, existing natural constraints, and the goals and policies for development which have been formulated during the Update process. During the April Workshop, small working groups of residents reviewed the draft Land Use Plan and made suggestions for modifications. These were then discussed at a subsequent Steering Committee meeting, with a final draft Land Use Plan resulting. This document was then reviewed with the public at a Public Workshop recently held on September 20th, at the Township Building. Attendees also had an opportunity to discuss proposed implementation actions, and how these should be prioritized to best make the Plan Update’s recommendations reality. These actions include things like amendments to the Zoning Ordinance and Zoning Map, projects that have potential impact on the Township’s operating budget and its Capital Improvement Program and Budget, and others.

Completion of the Update is projected by year’s end. Though originally scheduled to be completed earlier, the Township amended the contract with Bergmann in August to add two additional meetings. After evaluating the number and significance of the suggested changes during the second Public Workshop, the Steering Committee recommended a third Public Workshop to review the final changes to the Land Use Plan prior to completing the draft Update. The Steering Committee also recommended holding an additional review session with the Township Planning Commission, following the third Public Workshop. The Board agreed that it was important to add these meetings to make sure that there is adequate opportunity for public input, given the importance of the Comprehensive Plan Update as a policy guide for future development within the Township.

Before the Plan Update is adopted, state law requires that the Township Planning Commission holds a Public Meeting to discuss the document and formulate a recommendation for adoption to the Board of Supervisors. The Board is then required to hold a Public Hearing and solicit comments from the public, prior to adopting the Update. The Update must then be adopted by the Board by passing a resolution which will effectuate the adoption of the Update as a formal amendment to the 2003 Comprehensive Plan. Both the Planning Commission’s Public Meeting and the Board of Supervisors’ Public Hearing will be publicized on the Township’s website and advertised in The Times Herald newspaper. Adoption by the Board is expected in early 2019.

NEW GATEWAY POCKET PARK DEDICATION

On Thursday, September 13th Whitemarsh Township dedicated a new gateway pocket park on the corner of Flourtown Road and Butler Pike. The Board of Supervisors, Township Officials, and the community enjoyed a ceremonial ribbon cutting and unveiling of a permanent cast iron plaque. The parcel was purchased in 2012 with the Township Open Space EIT fund, which was enacted by the Citizens of Whitemarsh in 2007 for the



acquisition and preservation of local open space. The parcel has become a scenic passive park with a welcoming sign, flowering trees, and seasonal plants. A highlight of the park is an internal meandering accessible walkway that leads to a center focal point with a trellis, benches, and picnic table.

PWHS SAFE ROUTES TO SCHOOLS



The township was awarded a \$250,000 grant from the Commonwealth Financing Authority that will help fund the "P.W. High School Safe Routes to Schools" project. This important safety project will address two areas that were identified as needing additional safety and mobility improvements for motorists and pedestrians in the vicinity of Plymouth-Whitemarsh high school.

The first area is the currently uncontrolled midblock pedestrian crossing of Germantown Pike at Mayflower Road. This project will see the installation of push-button-activated flashing pedestrian signals, along with new curb ramps, updated signage, and additional pavement markings at the crosswalk area.

The second area being addressed is the intersection of Colonial Drive and Flourtown Road, a popular ingress/egress point to both PWHS and Colonial Middle School. The Township will install a traffic signal, westbound left turn lane, and associated improvements at the intersection.

The "PWHS Safe Routes to Schools" project will bring important safety improvements to two major high-traffic points for students and community members accessing PWHS, CES, district offices, and district recreation facilities during and after school hours. The planned enhancements will create a safer, more comfortable environment for pedestrians and motorists utilizing the school facilities and programs.

WELLS ST. OPEN SPACE PARCEL UPDATE

We are happy to announce that recent maintenance and improvements have been made on the Wells Street Open Space Parcel, generally located in the area between Cedar Grove Road, Wells Street, and Hillcrest Avenue. In line with the 2015 Gambone Property and Natural Area Stewardship Plan, a trail system and meadow area have been developed to create passive recreation opportunities for our local residents. We invite all of our residents to enjoy this scenic natural passive site, including the nearly 1 mile of newly-developed nature trails. The trailhead opening for the site is accessible by using the parking lot off of Wells Street.



The Wells St. Open Space Parcel is open dawn to dusk throughout the year and visitors are asked to carry-in, carry-out any trash, as there are no waste receptacles provided. The use of motor vehicles, hunting, and dumping, is prohibited on the property at all times. We look forward to continuing to provide a safe, clean, and beautiful natural area for our entire community to enjoy.

The Miles Park improvement project has been progressing over the past few months and has recently moved into the next phase of the project. The project is funded through grants awarded to the Township from the Pennsylvania Department of Community and Pennsylvania Economic Development and the Department of Conservation and Natural Resources. The improvement project will include reconstruction and regrading of fields 1 and 2, realignment of field 3, stormwater management, enhanced access, community linkages, and ADA accessibility for Miles Park.

MILES PARK PROJECT UPDATE

As this phase of the project moves forward, you will notice increased activity of construction vehicles and personnel in the park. While the areas of Miles Park that are not affected by the construction project remain open, please use extreme caution any time you are near the construction area. The safety of all park visitors is the highest priority. It is anticipated that the project will be completed and ready for public use in the spring of 2019.





WHITEMARSH TOWNSHIP PARKS & RECREATION
CLOTHING DRIVE



2ND ANNUAL FUNDRAISER

Proceeds support Whitemarsh Township Day and
the Colonial Neighborhood Council



COLLECTING IN STANDARD SIZE KITCHEN TRASH BAGS
(13 GALLON BAGS OR ANY DRAWSTRING GARBAGE BAG):

Usable and wearable men's, women's and children's clothing and shoes
Accessories; belts, handbags, hats, scarves, ties, gloves, etc. (no hangers)

In person drop-off dates & times:

Friday, January 18th 8AM-2PM
Saturday, January 19th 8AM-12PM
Monday, January 21st 8AM-12PM

Non-staff drop-off:

*If staff are not on site feel free to drop off
bags under the overhang. Last drop off date
is Wednesday, January 23rd 8PM*



Drop-off location:

Cedar Grove Barn
100 Cedar Grove Road,
Conshohocken, PA 19428

*Those who donate can receive
tax reduction receipts. If staff
are not on site, please visit the
Koontz Park office for a receipt.*

We are proud to announce that Moody's Investors Service has assigned the highest possible credit rating of "Aaa" with a Stable Outlook to Whitemarsh Township, noting the "township's strong financial profile with ample reserves which have been maintained while funding capital improvements. Additionally, the rating reflects the township's large and affluent tax base which has exhibited steady growth, a debt burden that is below-average and a manageable pension liability."

MOODY'S INVESTORS SERVICE RATING

Whitemarsh Township is one of only eight townships in the Commonwealth of Pennsylvania to be rated "Aaa" by Moody's, and only one of four municipalities in the Commonwealth to have all three tax rating authorities - the municipality, the county, and the school district - have the "Aaa" rating by Moody's.

The Moody's rating is related to a \$9.995 million Township bond offering and the Township is working with PFM Financial Advisors, LLC, its financial advisor, on selling the bonds in late August 2018. Proceeds from the Series of 2018 Bonds will be used to refund a portion of the township's Note Payable, Series of 2009 and to finance various capital improvements related to intersection improvements, stormwater projects, and facility upgrades throughout the Township.

MONTGOMERY COUNTY RECYCLING EVENTS



Household Hazardous Waste Collection

Sunday, October 21st

9:00am - 3:00pm (rain or shine)

Lower Merion Transfer Station

1300 N. Woodbine Ave, Narberth, PA 19072

***Montgomery County Residents Only!**

***No Businesses!**

**MONTCO PA
RECYCLES**



MontcoPARecycles.org



Montgomery County hosts hazardous waste collection events throughout the year where residents can bring unwanted hazardous household materials to be recycled. Please keep in mind the following guidelines as you collect materials to drop off:

- Businesses & Contractors will be turned away!
- Bring all substances in original containers with labels. Items must be identifiable. Do not mix materials.
- Maximum amount accepted is 25 gallons or 220 pounds. No 25 or 50 gallon drums.
- Tighten lids on all containers. If containers are leaking, pack in larger container with newspaper to soak up leakage.
- Event workers will unload your materials, so please remain in your car.

For a complete list of event guidelines & accepted materials, visit:

<https://www.montcopa.org/706/Household-Hazardous-Waste-Collection-Pro>

COMMUNITY DOCUMENT SHREDDING EVENTS

Montgomery County Residents who have paper and documents that should be shredded are encouraged to take advantage of these events. Residents are urged to make sure that the materials they present for shredding do not include plastic, cardboard, or metal. However, there is no need to remove staples, paperclips, or hanging folders.

Have questions or want additional information? Call Montgomery County Recycling at (610) 276-3618 or e-mail recycling@montcopa.org.

For the most up-to-date list of Shredding Events in the County visit:

<https://www.montcopa.org/1588/Document-Shredding-Program>

2ND Tuesday of Every Month

8:30am - 9:30am (rain or shine)

Upper Moreland Township Library

117 Park Ave, Willow Grove, PA 19090

***Open to the public - No Businesses!**

***\$10 per standard box**

Recycle RIGHT

Did You Know?

It costs environmental service providers and local governments **MILLIONS** of dollars each year to remove contaminants.



Environmental service providers are forced to discard entire batches that could have been recycled if they are overly contaminated.



Improper recycling practices means that much of what you throw in the recycling bin could end up in landfills or incinerators if you're not careful!

Acceptable Materials

Residential Guide to **SINGLE STREAM** recycling.

GLASS

Mixed Colored, Amber, Flint, Green

CANS

Used Beverage Cans, Ferrous & Non-Ferrous Metals, Steel Cans, Iron, Bulk Metals, Cast Iron (pots & pans), Brass, Copper, Aluminum and Aluminum Foil

PAPER

Newspapers, Magazines, Brochures, Corrugated Cardboard & Paper Bags, Paper Town Rolls, Cartons, Mail, Paperboard Boxes, Office Paper

PLASTICS

#1, #2, #3, #4, #5, #6 and #7 "Other" Misc. Plastics

Common Contaminants

Contaminants that should **NOT** be included with your recycling!



PLASTIC BAGS

Plastic bags clog machinery and force sorting facilities to shut down. You may recycle clean, dry, and empty bags at participating grocery stores or appropriate drop-off centers.



SHREDDED PAPER

Shredded paper is too small to sort. Pieces may fall inside the sorting machines and stick to the belts. Please avoid shredding when possible because it destroys the potential for recycling.



SCRAP METAL

Scrap metal items of any size should not go into your curbside bin. These items cause excessive damage to the recycling equipment.



HAZARDOUS WASTE

Hazardous waste such as paint, automotive fluids, car batteries and pesticides must be taken to your local Hazardous Waste Facility, not to the Recycling Center.



DIAPERS OR BIO-HAZARDOUS WASTE

Syringes and needles, diapers and other sanitary products, even if they are made of plastic or paper products, should not be recycled because of the dangers they pose.



STYROFOAM AND NONRECYCLABLE PLASTICS

Many plastics are still not recyclable. Plastic lids, foam (Styrofoam®) and any other plastics are not recyclable because stable markets do not exist for these materials.



CRUSHED OR FLATTENED CONTAINERS

The single-stream sorting equipment separates "flats" (paper) from "rounds" (containers). The equipment sends flattened materials with the papers, contaminating those batches.



CAPS/LIDS ON GLASS BOTTLES OR JARS

Metal lids can be removed and recycled loose in the bin. Plastic lids and caps from glass bottles and jars should be thrown away.



LIQUIDS

When machines compact bottles for shipping, liquids drip, splatter and explode all over the floor, creating a sticky, smelly mess on the sorting floor and contaminate other materials.



FOOD CONTAINERS

Food residue can contaminate boxes or other recyclable materials. Frozen food boxes also contain a protective coating that does not break down in the recycling process.



WHEN IN DOUBT, THROW IT OUT!

There are many other materials that could hinder the recycling process. It's better to be safe than risk contaminating entire batches that could otherwise have been recycled.



For more information on recycling, visit the Township website:
<http://www.whitemarshwp.org/184/Residential-Recycling>





Whitemarsh Township Parks & Recreation

SPOOKTACULAR FAMILY NIGHT

Friday, October 19, 5:00PM - 9:00 PM

(Raindate: Saturday October 20th)

Cedar Grove Barn - 100 Cedar Grove Road

\$5.00 a person ages 2+ under 2 is free.

Join us Friday evening for a night full of games,,
crafts, contests and more.



GAMES - PUMPKIN DECORATING

HAUNTED HOUSE - HAYRIDE

COSTUME CONTEST - PHOTO BOOTH

PUMPKIN CARVING CONTEST

For more information and contest rules please
visit www.whitemarshparks.org



trick
-OR-
treat



ATI
PHYSICAL THERAPY

OUTBACK
STEAKHOUSE®



610-828-7276

www.whitemarshparks.org

2018 FALL LEAF COLLECTION

Every fall, the Township Public Works Department provides leaf collection services to the residents of Whitemarsh Township. Residents that would like to take advantage of this service are asked to pile their leaves along the curb for collection. **Leaves are not to be bagged.**

2018 leaf collection will begin on Monday, October 15th and will continue through Monday, December 17th. Leaves that are not piled alongside the curb prior to 6:30am on Monday, December 17th will not be collected.

The Township Public Works Department will make every effort to collect from each street at least once per week.

STORMWATER MANAGEMENT TIPS FOR RESIDENTS

Homeowners can take steps to help reduce the effects of stormwater runoff in their communities. By doing their part, homeowners can help reduce the speed and amount of runoff, which helps keep local creeks and waterways healthy for years to come. Help preserve the health and beauty of the streams and creeks of Whitemarsh Township by using some of the stormwater management tips listed below!

TREES & PLANTS



A mature tree's network of leaves slows rainfall during a storm, reducing the speed that raindrops hit the ground and slowing the erosion of soil into the stream. Plants and trees absorb rain, and leaves drop rainfall onto the ground for hours after a storm, giving more water a chance to seep slowly underground. A tree's roots hold the soil, preventing soil from washing into waterways.

RAIN BARRELS



Rainfall flows down rooftops into gutters and downspouts, then gushes down driveways to flow into the street and storm drains. To slow water down (and save money on water bills), consider a rain barrel. Place the barrel under a downspout, then capture the water for the lawn or garden. Learn more about different types of rain barrels by visiting the Department of Environmental Protection link below!

POROUS PATIOS & WALKS



The large amount of impervious cover can be a significant contribution to excessive stormwater runoff. Consider reducing the amount of impervious surface on a property with driveways or parking areas built from porous asphalt or special concrete blocks containing holes to allow rainfall to trickle through. Or try a patio made from loose slate with gravel between rocks.

LET IT GROW



A close-cropped, well-manicured lawn may look attractive, but it allows stormwater to flow across it too quickly. Maintaining grass at a height of at least four inches slows the growth of weeds while better absorbing stormwater.

RAIN GARDENS



A rain garden is a planted shallow depression designated to catch and filter rainfall runoff. The garden captures rain from a downspout or a driveway. The water sinks into the ground, aided by deep rooted plants that like wet and dry conditions. Rain gardens have been proven to help slow down stormwater runoff and filter pollution, protect rivers and streams, and create a healthy habitat for birds and butterflies.

For more information on stormwater management and effective management practices, visit the Department of Environmental Protection's stormwater management page using the link below:

<https://www.dep.pa.gov/Business/Water/CleanWater/StormwaterMgmt/Pages/default.aspx>



NEW REGULATIONS FOR BUILDING CODES

On October 1st, 2018, new regulations went into effect codifying the RAC report on the 2015 ICC Model Code re-review including the provisions of the 2014 National Electric Code.

Moving forward, all subsequent RAC review and adoption of future Model Code provisions will be delayed by three full years. As an example, the 2018 ICC Model Codes will not be eligible for enactment in Pennsylvania until March of 2022.



WHEN PERMITS ARE REQUIRED

- Adding or replacing all plumbing fixtures, including water softeners, water heaters, and garbage disposals (replacing an existing residential garbage disposal does not require a permit)
- Constructing a new building, additions, enclosures, and alterations to an existing building, including decks, porches and sunrooms
- Erecting signs
- Installing a permanent heating or air conditioning equipment
- Installing fences, utility sheds, or above-ground and in-ground swimming pools (4 feet or deeper)
- Installing fire protection systems and modifying systems including fire alarms, security systems, burglar alarms, sprinkler systems, hood systems, fire places and fire suppression systems
- Regrading property
- Removing and installing storage tanks, both above ground and underground
- Replacing a roof
- Working on an on-site sanitary sewage system (through Montgomery County)

If you are still unsure whether you need a permit for your project, please contact Whitmarsh Township Building and Permits at (610) 825-3535.



PROPERTY MANAGEMENT REMINDERS

In the interest of public safety, the Township asks that all trees and shrubs on your property be trimmed as to provide:

- A minimum clearance of 11 feet over any public street.
- A minimum clearance of 9 feet over any public sidewalk or walkway.
- A clear sight triangle at intersecting streets.

Grass should be maintained to a maximum of 10 inches, and all weeds must be treated and removed within 25 feet of adjoining properties and public ways.

The Township and your neighbors appreciate your cooperation!



DON'T CREATE OPPORTUNITIES FOR CRIME!

**LOCK IT,
REMOVE IT,
OR
LOSE IT!**



While we were fortunate to have a relatively low rate of serious criminal incidents within Whitemarsh Township, recently many of our residents did become victims of thefts from their vehicles. In this past year the Whitemarsh Police have taken nearly 100 reports of thefts from vehicles within our Township's borders. In nearly all of these instances, the vehicles were left unlocked while parked and unattended. In addition, our residents have experienced motor vehicle thefts associated with these theft from vehicles. All of these stolen vehicles have been left, unattended or parked with the keys inside. The Whitemarsh Police would greatly appreciate the residents' assistance in fighting this type of crime by simply locking their homes and vehicles, and not leaving items of value in plain view inside of their cars. The fraction of time it takes to secure your valuables may make the difference.

ATF CERTIFICATION FOR CANINE "NIKA"

In early August, Officer Matt Stadulis and Canine Nika attended a three-day explosive training course with the Bureau of Alcohol, Tobacco and Explosives. During the course of training, Nika was administered the National Odor Recognition Test (NORT). The NORT test consists of ten small amounts of explosive odors being placed with other distracting decoy smells such as food, toys and other desirable items that may distract the canine. In order to pass the test, the canine must search 30 containers and detect all ten explosive odors, while never alerting handlers to an odor that is not explosive. Officer Stadulis and Nika successfully completed this test and were awarded Certification by the ATF.



NEW POLICE OFFICER

Officer Stephen P. Dunning

In mid-August Officer Stephen P. Dunning joined the Whitemarsh Township Police Department, replacing recently retired Sergeant Charles Swan. Ofc. Dunning is a lifelong resident of Essex Junction, which is a suburb of Burlington, Vermont and he is a nine-year veteran of the Essex Police Department in Vermont. Ofc. Dunning is a decorated officer, having received numerous awards during his career, including the Medal of Valor for rescuing a woman from a house fire. Ofc. Dunning is a licensed paramedic and certified instructor in Emergency Vehicle Operations. Ofc. Dunning has been assigned to the Patrol Division with A Squad and Field Training Officer Corporal Mark Williams.



Drug Take Back Day

Whitemarsh Township will once again be taking part in the National Prescription Drug Take Back Day. On Saturday, October 27th from 10:00am - 2:00pm, residents will be able to safely dispose of their unused prescription drugs by taking them to the Whitemarsh Township Police Department.

GAMES. CRAFTS. TREATS.



Come dressed in a costume for a
SPOOKTACULAR good time!

**T
E
E
N
I
E
H
A
L
L
O
W
E
E
N
I
E**

TUESDAY, OCTOBER 23RD

10:00 AM - 12:00 PM

CEDAR GROVE BARN

100 CEDAR GROVE ROAD, CONSHOHOCKEN, PA 19428

\$5 PER CHILD- PAY AT THE DOOR

**JOIN US FOR A KIDS CONCERT DURING THE
EVENT PRESENTED BY OUR FRIENDS AT
JUMP, JIVE, & JAM MUSIC!**



WWW.WHITEMARSHPARKS.ORG

610-828-7276



ANNUAL FUND DRIVE

Each year, the Barren Hill Volunteer Fire Company asks for your financial support to assist with our day to day operations through our Annual FUND DRIVE campaign. Our request for 2018 came via standard mail in late Spring. We send our Annual Fund Drive asking for your support because, unlike larger cities, Fire Services in Whitmarsh Township are not fully funded by the taxes that are paid by each household. It is the Fire Companies responsibility to raise much needed funds to continue our first class Fire & Rescue Services for our Community.

Our FUND DRIVE asks each household to consider donating less than \$1.00 per week to assist the local VOLUNTEER Fire Company. Sadly, less than 1 out of 4 households respond to our Fund Drive Campaign. If you misplaced the Fund Drive campaign letter or it got lost in the shuffle, our 2nd mailing will be in the mailbox soon! (If it hasn't already reached your door by the time of publication!) Please consider supporting the Barren Hill Volunteer Fire Company's 2018 Annual Fund Drive Campaign!

EVER WONDER WHAT WOULD HAPPEN IF OUR VOLUNTEERS...DIDN'T??

Did you know that in the 1970's, according to the Pennsylvania State Fire Commissioner's Office, the number of volunteer firefighters in the Commonwealth of Pennsylvania was estimated at 300,000. Today, Officials estimate that the volunteer rolls in the Commonwealth of Pennsylvania are a mere 50,000. **WE NEED YOUR HELP!** In addition to firefighters, we need administrative volunteers as well to assist with fundraising and other tasks. For more information, checkout www.barrenhill.com/volunteer or stop by on a Monday night during our training exercises to meet your local Volunteers and see how you can become a part of this first class Organization.

501(c)3 APPROVED!



After many months of hard work, the Barren Hill Volunteer Fire Company is now an officially approved 501(c)(3) Non-Profit Organization! We are now eligible for employer matching programs and other charitable donations such as Amazon Smile!

CHANGING TIMES AT STATION 29... WE'VE HAD TO SAY GOODBYE!

In 2015, the Barren Hill Volunteer Fire Company embarked on a long range plan to map out our Future with regards to apparatus replacement goals. As part of the long range plan, the Barren Hill Volunteer Fire Company has sold our 1999 Engine and 2000 Heavy Rescue and are in the process of purchasing one piece of apparatus that will combine the resources from both units into one. The delivery of this new Rescue Pumper is expected in the Fall of 2019. The 1999 Engine and the 2000 Heavy Rescue provided unmatched service to our Community and will be missed by our Volunteers, however, we look forward to the new doors that open in the future with our new Rescue Pumper. We also wish each truck well as they move on to their new homes in Tennessee and Michigan!



The reality is that the cost of Fire Trucks has grown rapidly in the last several years due to material costs and safety requirements. Did you know that a standard Fire Engine in 1999 cost \$235,000, while our newest Engine in 2014 cost more than \$400,000. Similarly, our Tower Ladder that cost \$535,000 in 1997 will cost nearly \$1,300,000 or more when it needs to be replaced in the next 5 years.

THE COST OF FIREFIGHTING...

Personal Protective Equipment to Outfit 1 Firefighter...
\$3,085.00

Class A Fire Enginer for Fire Company Operations...
\$450,000 - \$500,000

Rescue Truck / Squad Rescue Pumper...
\$650,000 - \$750,000

Tower Ladder for Fire Company Operations...
\$1,100,000 - \$1,300,000

BARREN HILL FIRE HOUSE HALL RENTAL

Did you know our Hall is available for rent? Call the Hall Rental Manager at (484) 362-9132 or visit our website at www.barrenhill.com/hallrental for additional information, rates, and availability!

President: Wayne Masters
President@springmillfire.com

Chief: Bob Shoemaker
(610) 825-1164

1210 East Hector Street
Conshohocken, PA 19428
(610) 825-1164 (station)
www.springmillfire.com



SPRING
MILL FIRE
COMPANY

SPRING MILL FIRE COMPANY NO. 1

Spring Mill Fire Company has proudly protected and served the residents, businesses and visitors of Whitmarsh Township and our surrounding communities, 24 hours a day, 7 days a week since 1923. We provide protection and assistance for firefighting, rescue operations and fire police operations. In 2017, our volunteers spent over 5,525-man hours on training, responding to emergency calls for service as well as participating in several community events.



FIREFIGHTING CERTIFICATIONS & TRAININGS

Firefighter certification and training for a new member requires approximately 190 hours of theory and practical evolutions before being able to actively participate in an emergency setting. Aside from firefighting, we also specialize in Swift Water Rescue and Underwater Search, Rescue and Recovery with our Dive Unit.

In 2018, our members continued an aggressive push for training and received certifications in the following areas; Truck Operations, Traffic Incident Management, First Aid, CPR and AED recertification, Rescue Scene Management, Incident Size-up, Elevator Rescues, as well as completion of our annual Hazmat Operations level refresher. The Company also successfully achieved Silver Level Certification through the Participating Department Recognition Program of the PA State Fire Commissioners office which will be valid through September 2020.



HELP US, HELP YOU. YOU ARE HELPING YOUR FAMILY AND YOUR COMMUNITY!

If every household could just donate \$25, less than a single tank of gas for most, you can make a tremendous difference.

We are 96% volunteer, which means most of our personnel are on call 24 hours a day 7 day a week. These men and women drop whatever they are doing at a moment's notice to respond to emergencies in Whitmarsh Township and to provide mutual aide to our surrounding communities. We have 1 full-time Driver/Firefighter who works daily Monday thru Friday as well as part-time staffing that provides evening and weekend coverage.

VOLUNTEER

As a volunteer organization, we are always looking for new members. There are many duties that can be performed in addition to firefighting and responding to emergencies. If you are interested in becoming a volunteer, please visit www.springmillfire.com or stop by the station any Monday evening from 7pm-9pm.

join us for a

Gingerbread House Decorating Party



Cost: \$15 per house

*This program is not recommended for children under age 4.
Adult supervision IS required*

We pre-assemble the houses and provide decorating materials, you provide the creativity!



Sunday, December 2nd - 1:00 - 3:00 PM
Parks & Recreation Building - 4021 Joshua Road



www.whitemarshparks.org - 610-828-7276

PARKS & RECREATION PROGRAMS

Kids in Motion

Ages: 2-4 yrs **Min/Max:** 6/12
Fee: \$42.00 Whitemarsh Res / \$48.00 Non-Res
Price Per Session - 6 Classes Per Session

Location: Parks & Recreation Building- Room A

Kids in Motion is a movement class for children ages 2-4 that focuses on motor skill development and socialization through music, dance, and games. Please dress comfortably and come prepared to move! **Parents are required to attend and participate in this course.**

SESSION	DAYS	DATES	TIMES
2	Monday	11/5-12/10	10:00am - 10:45am

Engineering For Kids: Taking to the Skies

Ages: 4-7 yrs **Min/Max:** 8/16
Fee: \$135.00 Whitemarsh Res / \$150.00 Non-Res
Price Per Session - 6 Classes Per Session

Location: Cedar Grove Barn

Instructor: Engineering For Kids Instructor

The Junior Aerospace Engineering classes introduce our youngest engineers to fundamental concepts of aircraft and spacecraft design. Through open and focused exploration, students explore and construct airplanes, rockets, helicopters, and more!

SESSION	DAYS	DATES	TIMES
1	Tuesday	11/6-12/11	5:30pm - 6:30pm

Engineering For Kids: Up, Up, and Away!

Ages: 8-12 yrs **Min/Max:** 8/16
Fee: \$135.00 Whitemarsh Res / \$150.00 Non-Res
Price Per Session - 6 Classes Per Session

Location: Cedar Grove Barn

Instructor: Engineering For Kids Instructor

During the Aerospace Engineering classes, students use the Engineering Design Process to develop, create, test, and refine a variety of flying machines. They construct shock absorbing systems to protect two marshmallow astronauts in a lunar vehicle, create their own air-powered rockets, and assemble a model blimp that actually takes flight! **No class on 11/21.**

SESSION	DAYS	DATES	TIMES
1	Wednesday	11/7-12/19	5:30pm - 6:30pm



Create a Floral Turkey

Ages: 18+ **Min/Max:** 4/12
Fee: \$37.00 Whitemarsh Res / \$44.00 Non-Res

Location: Cedar Grove Barn

Learn floral design techniques as you create a “no-calorie” floral turkey that will surely be a conversation piece for your Thanksgiving table. Please bring your own floral shears and a shallow box to take your creation home in.

SESSION	DAYS	DATES	TIMES
1	Sunday	11/18	1:30pm - 3:00pm

Holiday Evergreen Floral Arrangement

Ages: 10+ **Min/Max:** 4/12
Fee: \$29.00 Whitemarsh Res / \$36.00 Non-Res

Location: Cedar Grove Barn

Learn floral design techniques as you make a floral evergreen arrangement to give as a gift or display on your own holiday table. Bring any glass ornaments you would like to use in your arrangement. Also bring pruning shears that cut evergreens and a box to take your creation home.

SESSION	DAYS	DATES	TIMES
1	Friday	12/7	7:00pm - 8:30pm

PARKS & RECREATION PROGRAMS

Gentle Flow Yoga

Ages: 16+ **Min/Max:** 6/14
Fee: \$56.00 Whitemarsh Res / \$63.00 Non-Res
Prices Per Session - 6 Classes Per Session

Location: Koontz Park - Program Room A

Instructor: Kimberly Brock

This class is great for beginners wishing to start a practice, as well as those who appreciate moving slowly and consciously through the postures. Yoga practice helps to improve core strength, posture, balance, and flexibility, in addition to releasing physical and emotional stress. Individual's needs are addressed in a safe, nurturing, non-competitive environment.

SESSION	DAYS	DATES	TIMES
2	Thursday	11/1-12/13	9:30am - 10:45am



Restorative Yoga

Ages: 16+ **Min/Max:** 6/14
Fee: \$56.00 Whitemarsh Res / \$63.00 Non-Res
Prices Per Session - 6 Classes Per Session

Location: Koontz Park - Program Room A

Instructor: Kimberly Brock

Are you ready to release physical and emotional tension from the week so that you feel fresh and clear for the weekend? In this restorative style of yoga, poses are held longer, allowing one to dive deeper into relaxation. Deep relaxation helps to calm the nervous system and the mind, reduce stress levels, and restore energy. Class begins with a brief gentle flow to prepare for practice. Individual's needs are addressed in a safe, nurturing, non-competitive environment. **No class on 11/22.**

SESSION	DAYS	DATES	TIMES
2	Thursday	11/1-12/13	7:15pm - 8:30pm

Radio City Christmas Spectacular Trip

Ages: Any (Under 18 yrs must travel with adult) **Min/Max:** 30/50
Fee: \$110.00 Whitemarsh Res / \$125.00 Non-Res
Prices Include Round-Trip Transportation & 1 Show Ticket

Departure Location: Miles Park Lower Parking Lot

374 Germantown Pike, Lafayette Hill, PA 19444

Have you ever wanted to see the famous kick line performed by the Rockettes? Or are you anxious to see it again? Join the Parks & Recreation Department to see this year's "Radio City Christmas Spectacular" at Radio City Music Hall in New York City! We provide the transportation and the tickets! All seats are in the first few center rows of the 2nd Mezzanine for the 11:00am show. Afterwards, you will have time to grab a bite to eat, sightsee, or shop before heading home.

SESSION	DAYS	DATES	TIMES
1	Thursday	12/6	8:00am - 8:00pm



Zumba With Elaine B.

Ages: 16+ **Min/Max:** 6/14
Per Session Fee: \$50.00 Whitemarsh Res / \$55.00 Non-Res
Class Drop-In Fee: \$10.00 Whitemarsh Res / \$12.00 Non-Res

Location: Koontz Park - Program Room A

Instructor: Elaine Bowne

Our Zumba certified instructor will be bringing Latin, Pop and Oldies songs to life for the class. Dance along to exciting and FUN routines. Sing along to your favorite songs and move to the music. This is not a high intensity class and we will design our workouts to the specific needs of our class participants!

SESSION	DAYS	DATES	TIMES
2	Tuesday	10/30- 12/4	10:00am - 10:45am

Connecting Exceptional People Socials

Location: William Jeanes Memorial Library - 4051 Joshua Road, Lafayette Hill, PA 19444

Connecting Exceptional People (“CEP”) provides services and support for adults ages 16 and older who have special needs and abilities. CEP was created to connect young adults with each other and their community so they can achieve positive, productive, and meaningful adult lives. CEP provides opportunities for people with disabilities to come together in a safe and welcoming environment to pursue friendships, fun, and resources they would not otherwise find. CEP’s focus is on the whole person so they can be actively engaged, understood, skilled individuals whose personalities are shared with and enjoyed by others. This program is offered in partnership with the William Jeanes Memorial Library. This program is free to attend and you do not need to be a Whitmarsh Township Resident to attend. In most cases the CEP Socials are held on the 3rd Friday of each month, but please refer to the Calendar of Events found on the WJML located at the following link: <https://jeaneslibrary.org/events/month/>.

Looking for additional information? Contact Deborah Moore at 610-828-0441 Extension 107 or dmoore@mclinc.org.

**All CEP themes are subject to change.*

Date	TIME	CEP SOCIAL THEME
Friday, October 12 th	6:00pm - 9:00pm	Around the World in 180 Minutes
Friday, November 16 th	6:00pm - 9:00pm	Magic Show
Friday, December 21 st	6:00pm - 9:00pm	CEP Gives Back Celebration



WANT TO GET INVOLVED?

The whitmarsh Township Parks & Recreation Department and William Jeanes Memorial Library are looking to expand on the CEP Program and begin offering socials designed for Middle-School-Aged participants!

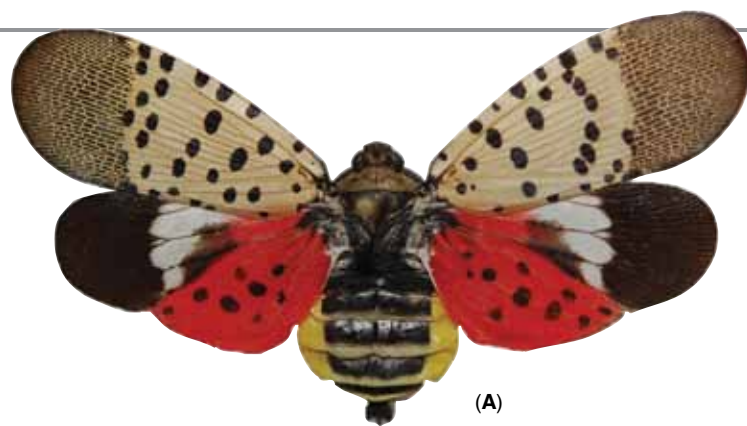
In order to best serve the needs of the families in our community, we will be hosting a CEP Middle-School-Aged Planning Meeting on Tuesday, November 27th from 6:30-7:30pm at the WJML. We invite anyone interested in providing their support, input, and ideas for this new & exciting program to attend!

Want more information? Contact Mike Lannutti WTPR Program Coordinator at (610) 828-7276 or MLannutti@whitemarshwp.org

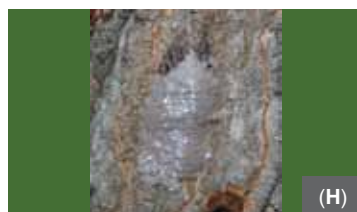
Pest Alert

Spotted Lanternfly

Lycorma delicatula (WHITE)
(Hemiptera: Fulgoridae)



The Spotted Lanternfly, *Lycorma delicatula* (White), an invasive planthopper, has been discovered in Berks County, Pennsylvania. It is native to China, India, Vietnam, and introduced to Korea where it has become a major pest. This insect attacks many hosts including grapes, apples, stone fruits, and tree of heaven and has the potential to greatly impact the grape, fruit tree, and logging industries. Early detection is vital for the protection of Pennsylvania businesses and agriculture.



*Photos courtesy of Park et al. 2009, Biological Characteristics of *Lycorma delicatula* and the Control Effects of Some Insecticides.

(A) Spotted Lanternfly showing the fore and hind wings (B) Resting against bark (C) Lateral view (D) Early nymphs (E) Late nymphs (F) Feeding on wild *Vitis* sp. (G) Weeping sap trail on tree (H) Egg mass covered in waxy coating (I) Old hatched egg mass on a trunk.

Identification:

The Spotted Lanternfly adult is approximately 1" long and 1/2" wide at rest. The forewing is grey with black spots and the wings tips are reticulated black blocks outlined in grey (A, B, C). The hind wings have contrasting patches of red and black with a white band (A). The legs and head are black; the abdomen is yellow with broad black bands. Immature stages are black with white spots, and develop red patches as they grow (D,E).

Hosts:

In the fall, adults congregate on tree of heaven (*Ailanthus altissima*) (F), willows (*Salix* sp.), and other trees, in groups of up to 20. Egg masses will be laid on medium to large trees, on trunk, branches, and limb bases. After hatching in the spring, nymphs will move off the tree and search out new hosts, including several kinds of agricultural crops. In Korea, it has been reported to attack 65 different species, 25+ of which are known to grow in Pennsylvania.

Signs and Symptoms:

Trees, such as tree of heaven and willow, will develop weeping wounds. These wounds will leave a greyish or black trail along the trunk (G). This sap will attract other insects to feed, notably wasps and ants. In late fall, adults will lay egg masses on host trees and nearby smooth surfaces like stone, outdoor furniture, vehicles, and structures. Newly laid egg masses have a grey mud-like covering which can take on a dry cracked appearance over time (H). Old egg masses appear as rows of 30-50 brownish seed-like deposits in 4-7 columns on the trunk, roughly an inch long (I).

What to do:

If you see egg masses, scrape them off, double bag them and throw them away. You can also place the eggs into alcohol or hand sanitizer to kill them. Please report all destroyed egg masses on our website listed below.

Collect a specimen: Specimens of any life stage can be turned in to the Pennsylvania Department of Agriculture's Entomology lab for verification. Directions for submission are on the reverse side of this alert.

Take a picture: A photograph of any life stage (including egg masses) can be submitted to Badbug@pa.gov.

Report a site: If you can't take a specimen or photograph, call the Automated Invasive Species Report Line at 1-866-253-7189 and leave a message detailing your sighting and contact information.

For up to date information, visit:
www.pda.state.pa.us/spottedlanternfly

By: Lawrence Barringer, Entomologist
Pennsylvania Department of Agriculture



Includes a fully catered lunch and entertainment each month!



You do not have to be a Whitemarsh Resident to attend!

You're Invited!
Whitemarsh Township's
Eat & Enjoy Social Series

Limited Seats
R.S.V.P. Today!
Call 610.828.7276

All socials are hosted at the Parks & Recreation Building at Miles Park
4021 Joshua Rd, Lafayette Hill, PA 19444

Only \$10 per social! *12:00pm - 2:00pm*

Eat & Enjoy Fall Series Dates

Thursday,
Oct. 25th

Thursday,
Nov. 29th

Thursday,
Dec. 20th

Entertainment and lunch menus will be released as soon as they are available.
Call the Parks & Recreation Office at (610) 828-7276 for more information
or to register & reserve your spot today!

Fall Session 2018

The Whitmarsh Art Center is your community resource for the exploration of the Arts, serving children and adults since 1964. We offer classes for both the beginner and the experienced artist alike. We hope you'll join us for our next session starting September 24.

Ceramic Throwing and Decoration



Tuesdays, 7 - 10 PM

Cost: \$315; Discounts available for Members and Residents

Beginning or advanced adult students will learn and build a strong foundation in pottery form and surface. The course offers an opportunity to create functional items for use and enjoyment at home. All materials and firing included.

This class will run for 8 weeks with a 3 week break between October 23rd and November 6th.

Painting on Wednesdays



Wednesdays, 6:30 - 9:30 PM

Cost: \$355; Discounts available for Members and Residents

Deepen your understanding of color theory, perspective and brush stroke. Whether you're an experienced artist or just starting out, award-winning painter Stefanie Lieberman will guide you towards achieving your intended compositions.

This class will run for 10 weeks. Bring your preferred painting and reference materials or choose from the Center's supplies.

Painting on Thursdays



Thursdays, 9:30AM - 12:30 PM

Cost: \$355; Discounts available for Members and Residents

All experience levels are welcome in this painting class where the focus is on mastering painting fundamentals and having fun! Develop your own artistic style in an open and encouraging studio environment.

This class will run for 10 weeks. Bring your preferred painting and reference materials or choose from the Center's supplies.

Fun with Clay for Grades 1-4



Tuesdays, 4:30 - 6PM

Cost: \$220; Discounts available for Members and Residents

Ready to step up from play dough? This class is perfect for kids eager to get creative (and messy!) with real clay. Children will learn a variety of basic hand-building and finishing techniques through ceramic and sculptural projects.

This class will run for 10 weeks, beginning on September 25th.

A Lil Bit of Everything for Grades K-3



Wednesdays, 4:30 - 6PM

Cost: \$220; Discounts available for Members and Residents

Learn a little bit of everything in this mixed media class! Children will explore and work with a variety of mediums through projects that include drawing, painting and clay. Children may be divided into groups depending on skill level.

This class will run for 10 weeks, beginning on September 26th.

Drawing, Painting, & Sculpture for Grade 4-6



Thursdays, 4:30 - 6PM

Cost: \$220; Discounts available for Members and Residents

Already know your way around a paintbrush? Tired of making pinch pots? This is *the* class for older or experienced young artists. Improve your drawing skills, paint in new and different mediums and build your inspired designs.

This class will run for 10 weeks, beginning on September 27th.

Children's Art I for PreK and Kindergarten



Saturdays, 9 - 10AM

Cost: \$140; Discounts available for Members and Residents

Does your young child love art? Do you want to begin honing their creative talents and introduce them to the art world through drawing, painting, and clay? This 1 hour beginners' art class is the perfect fit! Children must be at least 4 years of age.

This class will run for 10 weeks, beginning on September 29th.

For more class offerings and information visit us at www.whitemarsharts.org



WILLIAM JEANES MEMORIAL LIBRARY

4051 Joshua Road, Lafayette Hill, PA 19444

610-828-0441 - jeaneslibrary.org - jeanesinfo@mclinc.org

ADULT EVENTS

WEEKLY

Open Game Play, Tuesdays 4:00 - 7:30 pm
Drop in for mah jongg, canasta, bridge, or your game of choice. No registration required.

Dropped Stitches, Tuesdays 6:00 - 7:45 pm
Experienced crafters welcome at this self-guided group. No registration required.

Gentle Yoga, Tuesdays 2:30 - 3:30 pm
Postures, meditation, and more. See website for cost and schedule. Drop-ins welcome.

Qi Gong, Thursdays 10:00 -11:30 am
Slow moving form of meditation. See website for cost and schedule. Drop-ins welcome.

Tai Chi for Health, Fridays 10:00 - 11:30 am
Gentle, flowing and challenging exercise. See website for cost and schedule. Drop-ins welcome.

Career Networking, Fridays 9:30 - 11:30 am
Support and networking group for those who are unemployed or in transition. Registration required, group size is limited. See website for details.

MONTHLY

Book Clubs come together on the **3rd Wednesday at 3:00 pm**, and **3rd Thursday at 6:30 pm**. Visit the website for a schedule of books and discussion guides.

Movie Matinees are held on the **2nd Monday** and **Last Wednesday at 1:30 pm** for a screening of a new release DVD. *Sponsored by Friends of the William Jeanes Memorial Library*

SPECIAL EVENTS

Red Cross Blood Drive, November 26 from 1:00 - 6:00 pm. Give the gift of life by donating blood! Help fill an need in the Greater Philadelphia Area. Register at redcrossblood.org or call Adam (see below).



For additional information, dates and times of monthly and special Adult events, please visit our website at jeaneslibrary.org or contact Adam Gilbert-Cole, Adult Services and Reference Librarian, at 610-828-0441 ext. 103 or acole@mclinc.org.

TEEN EVENTS

MONTHLY*

Youth Advisory Board (YAB) meets on the **1st Friday from 4:30 - 6:00 pm**. Teens grades 6-12 help create, plan, and implement teen programs for the William Jeanes Memorial Library.

The Q-Crew meets on the **2nd Wednesday from 6:00 - 7:30 pm**. LGBTQ+ teens and allies are invited to join the Library's Q Crew! Come discuss past and current topics, issues, and events in a safe space. Plus, snacks and a craft.

Anime Club happens on the **4th Monday from 6:00 - 7:30 pm**. Do you enjoy anime and manga? If so, join our Anime Club! Bring your friends (and make new ones) as you watch and discuss your favorite anime.

SPECIAL EVENTS

Book Discussion and Writing Workshop with YA Author Katherine Locke**



Sunday, October 7th from 1-4 pm

Katherine Locke, author of *The Girl with the Red Balloon*, will be leading a book discussion and then facilitating a writing workshop focused specifically on writing historical fiction. Everyone who registers will receive a free copy of her book!

**Program sponsored by the Friends of the William Jeanes Memorial Library's Nancy Corson Creative Writing Fund

Riverdale (Season 3 premiere) Viewing Party*—Wednesday, October 10 from 7:45-9 pm

At 7:45 you can pretend that you're at Pop's grabbing a bite with Archie and the gang with our milkshake bar, and then at 8 we'll start the episode! If you'd like, come dressed as your favorite character!



Stranger Things Escape Room*—Saturday, October 20 -various times—registration required

You and fellow teens have to figure out how to get out of the room before the Demogorgon comes!

*Program sponsored by the Friends of the William Jeanes Memorial Library

For additional information, dates and times of monthly and special Teen events, please visit jeaneslibrary.org or contact Sara Huff, Teen Librarian, at 610-828-0441 ext. 113 or shuff@mclinc.org.

LIBRARY HOURS

Monday, 12-8:00 PM Tuesday-Thursday, 10 AM - 8 PM

Friday & Saturday, 10 AM - 5 PM Sunday, 1:00 - 5:00 PM

**Closed Thursday and Friday, November 22nd and 23rd

CHILDRENS EVENTS

FALL CHILDREN'S STORYTIMES*

through December 11th

Babes & Books (0-18 mos.)

Tuesdays, 11:00 & 11:30 am except 10/16 and 11/20

Mother Goose (18-36 mos.)

Wednesdays, 11:15 am & Thursdays, 10:15 am except 11/21 and 11/22

Tales for Tots (3-4 yrs.)

Wednesdays, 10:15 am & Thursdays, 11:15 am except 11/21 and 11/22

Sensory Storytime (3 yrs. & up)

Tuesdays, 10:00 am except 10/16 and 11/20

Registration required.

Leap Into Literature (1st-3rd grade)

Wednesdays, 4:15 pm. Starts October 3rd.

Pajama Storytime

Wednesdays, 6:30 - 7:15 PM.

Sept 19, Oct. 10, Nov 14, and Dec 12

FAMILY MOVIE NIGHTS*

Enjoy a family-friendly screening of a recently released or favorite movie!

Wednesdays, 6:00 - 7:45 pm,

Sept 26, Oct 24, Nov 28, and Dec 19

**Sponsored by the Friends of the William Jeanes Memorial Library*

SPECIAL EVENTS

Paws and Read

Wednesdays, 6:30 - 7:30 pm

Oct 3, Nov 7, and Dec 5

Kids practice reading with a certified therapy dog.

Minutes with Misty

Friday, 11:30 am - 12:00 pm —see monthly calendar for dates

Families are invited to interact with a registered therapy Goldendoodle dog.

Build and Learn

Mondays, 2:00 - 7:00 pm

Sept 24, Oct 29, Nov 19, and Dec 17

Drop in and explore building activities! For babies through big kids, we'll have LEGO®, Magna-Tiles, and more!

For additional information, dates and times of monthly and special Kids events, please visit jeaneslibrary.org or contact Rachel Fecho,

COLLECTING/DROP-OFFS

September

New school supplies for Laurel House

October and November

Gluten-free food for The Rachel Way

See the website for full lists of what's needed!

FAMILY EVENT

DIY CAT BEDS

Thursday, October 4th from 5:30-7:30pm

Make your furry friend a bed they will love! This craft is easy and *purrrfect* for the whole family. Bring 15-20 adult-sized t-shirts with you and we'll show you how to weave them into a bed! We will be using hula hoops as a loom to make the beds. If you have a hula hoop at home, please bring it.



Sponsored by the Friends of the William Jeanes Memorial Library

CONNECTING EXCEPTIONAL PEOPLE

a monthly social series for young adults with special needs and abilities

Fridays 6 - 9 pm

October 12

Around the World in 180 Minutes

November 16

LEGO® Games with ColonialLUG

December 21

CEP Gives Back Celebration

Registration in the program is required. For additional information, dates and times of monthly and special events, please visit our website at jeaneslibrary.org or contact Deborah Moore, Operations and Public Relations Manager 610-828-0441 ext. 107 dmoore@mclinc.org.

CEP is held in partnership with Whitmarsh Township Parks and Recreation, and is partially funded by a grant from CCRES.

SAVE THE DATES

JEWELRY SALE FUNDRAISER

Saturday, November 3rd, 10:00 am - 3:00 pm

Sunday, November 4th, 1:00 pm - 3:00 pm

Get a jump on your holiday shopping with great deals on new and used, fine and costume jewelry and



CHECK US OUT!

*New collections to browse, new devices coming soon!

*Sign up for our monthly newsletter—ask our staff for information.

*Sign up for Wowbrary, our weekly newsletter featuring all of the new items added to the Collection in the previous week. See our website for details.

*Our complete Calendar of Events is available on our website and at either Check-Out Desk

*Follow us on Facebook, Twitter, and Instagram—news, events, and fun! www.jeaneslibrary.org

WHITEMARSH TOWNSHIP BOARDS & COMMITTEES

The Board of Supervisors receives the assistance of various boards/commissions in the operations of the Township. The various boards/commissions are staffed by citizen volunteers who commit hours of their personal time and bring their talents and skills to the township government. The following is a list of the boards and commissions and the members. If you would like to serve on any of these boards or commissions, please visit the Township website and submit a volunteer application.

(The listing of each board and committee members is as of September 17, 2018)

PUBLIC MEETING DATES & TIMES

BOARD OF SUPERVISORS

Second and fourth Thursday of each month at 7 pm at the Township Building - Also televised LIVE on Comcast Ch. 965 and Verizon Ch. 46.

EMERGENCY SERVICES BOARD

Third Wednesday of each alternating months starting with the month of February at 7 pm - locations vary

THE WHITEMARSH AUTHORITY

Third Wednesday of each month at 7 pm at the Township Building

ENVIRONMENTAL ADVISORY BOARD

Third Monday of every other month starting January at 7 pm at the Township Building

SHADE TREE COMMISSION

First Tuesday of each month at 7 pm at the Township Building

HISTORICAL ARCHITECTURAL REVIEW BOARD (joint with Plymouth Township)

Second Wednesday of each month at 8:30 am at the Township Building

OPEN SPACE COMMITTEE

Fourth Wednesday of every third month starting with January at 7 pm at the Township Building

MEDIA COMMUNICATIONS ADVISORY BOARD

Fourth Monday of every other month starting with January at 7 pm at the Township Building

LIBRARY BOARD

Fourth Wednesday of each month at 7:30 pm at the Library

PARKS & RECREATION BOARD

First Tuesday of every other month starting February at 7 pm at Koontz Park

PLANNING COMMISSION

Second and fourth Tuesday of each month at 7 pm at the Township Building

ZONING HEARING BOARD

First Wed. of each month at 7 pm, plus the second Wed. following (if needed) at 7 pm at the Township Building.

Some meetings may be cancelled, rescheduled or relocated, so please check the Township website for the latest meeting schedule.

WHITEMARSH TOWNSHIP BOARDS & COMMITTEES

ETHICAL STANDARDS ADVISORY BOARD

Nancy Langerfeld
John E. Mitchell
Paul Stanish
Lester Weinraub

OPEN SPACE COMMITTEE

Stephen J. Kaufman, *Chair*
Christopher L. Lane, *Vice-Chair*
Josh Cohn
Christopher Indelicato
Deborah Lamb
Joan Biddle
Hugh G. Moulton

PLANNING COMMISSION

Vincent Manuele, *Chair*
J. David Shula, PLS., *Vice-Chair*
Peter B. Cornog
Robert Dambman
Pat Doran
Sherri Glantz Patchen
Scott Quitel

HUMAN RELATIONS COMMISSION

Joanne Boyle
Celine Childs
Jennifer Etkin

VACANCY BOARD

Debra Brenner
Ari Greis
Shari Petrakis
Chris Solecki
Beth Waks

MEDIA COMMUNICATIONS ADVISORY BOARD

Lisa Litzinger-Drayton, *Chair*
Sharon Harvey, *Vice-Chair*
Crystal Taylor
Mark Cratin

ENVIRONMENTAL ADVISORY BOARD

Jonathan Picker, *Chair*
Deborah Sheero, *Vice-Chair*
Edward Brant
Monical Gallagher
Gordon Geasland
Deborah Heuckeroth
Lou Ann Merkle

SHADE TREE COMMISSION

Stephen J. Ziegler, *Chair*
Leigh Ashbrook, *Vice-Chair*
David D'Amore
Natalie Borkowski
Christian Fassbender

WHITEMARSH TOWNSHIP AUTHORITY

Timothy Ferris, *Chair*
Jonathan Riesberg, *Vice-Chair*
Jeffrey Mitchell, *Secretary*
Jori Broad
Jeanette Quirus

PARKS & RECREATION BOARD

Kevin Kissling, *Chair*
Joanne S. Crawford, *Vice-Chair*
James Convey
Terry Ferris
Thomas J. Manley, Jr.,
Megan O'Rourke

ZONING HEARING BOARD

Marc Weinstein, *Chair*
Stanley Casacio, *Vice-Chair*
Robert A. Bacine
James F. Behr
William E. Kramer
Randi Rubin Goldstein (Alternate)

LIBRARY BOARD

Stan Finegold, *President*
Dara Nasatir, *Vice-President*
Sally D. Lane, MD
David Segal
Diane Smith-Hoban
Eileen S. Spector
Jacy Toll
Linda Doll, *Friends President*

HISTORICAL ARCHITECTURAL REVIEW BOARD

Nancy Brown, *Chair*
Alex Pientka, *Vice-Chair*
Kenneth A. Parsons, AIA
Gerald Rafter
*(Plymouth Township also appoints 4
members. The 9th is appointed by the
members of the HARB)*

EMERGENCY SERVICES BOARD

John Lukens, *Chair*
Alex DiGiacomo, Jr., *Vice-Chair*
Ken Brook
Susannah Conicello
Nancy Langerfeld
Wayne Masters
Carol Proud
Renard Rose
Chris Schwartz
Bob Shoemaker
Sandy Singrella
Becki Werner
Eileen Behr (Alternate)
Fire Marshal, Scott Lynch
Chief of Police, Chris Ward
Township Manager, Richard L. Mellor, Jr.



Whitemarsh Township
616 Germantown Pike
Lafayette Hill, PA 19444
whitemarshtwp.org

National Prescription Drug **TAKE BACK DAY**

Most abused prescription drugs
come from family and friends.
You could be a drug dealer
and not even know it.



Saturday, October, 27th
10:00am - 2:00pm
Whitemarsh Township
Police Department



For more information, please visit www.dea.gov